

The Spitfire Grill

Seeking strong actor singers interested in ensemble storytelling

PERCY TALBOTT – early 20s. A young woman with a rough-edged strength and a sadness beyond her years. Her accent has a southern Appalachian cadence. Strong folk/country belt to 'D', some head voice required.

HANNAH FERGUSON – about 70. A tough-skinned and flinty old bird with a short, no-nonsense manner bordering on the bitter. Mezzo/alto chest range.

SHELBY THORPE – mid/late-30s. An uncomplicated, soft creature with a shy, almost ethereal manner. Shimmering folk soprano with strong high belt to 'D'.

CALEB THORPE – early 40s. Out-of-work foreman of the stone quarry. Disillusioned working man afraid of change. Solid folk/rock voice with an edge (Top 'G').

SHERIFF JOE SUTTER – mid-late 20s,/early 30s. A young small-town policeman with an appealing intensity and a restless nature. Strong folk tenor to a 'G' (touches an 'A').

EFFY KRAYNECK – 40s- 50s. Postmaster and busybody, a woman with narrow eyes and a sour tongue. Comedic skills. Solid singer in mezzo/alto chest range. Carries close harmony.

THE VISITOR – mid-40s. A mysterious figure who never speaks. An actor with powerful eyes and a very strong sense of his body.

Beautiful

Carole King - ***THIS ROLE HAS ALREADY BEEN CAST***– Female Presenting Character, Age: 25-35, Voice Part: Mezzo Soprano (F3 -F5), White. An ordinary girl from Brooklyn. An American songwriter/performer, Carole has been active from the 1960's and regarded as the most successful female songwriter of the latter half of the 20th century. Throughout the show we see her transform from a shy teenager into the confident woman who takes the plunge into becoming one of the most successful female singers of all time. Some piano skills are preferred. Non-dancing role.

Don Kirshner – Male Presenting Character, Age: 40-60, Voice Part: Bass/Baritone (A2-C4), White. A successful record producer and music publisher working at the Brill Building. He originally hires Carole, Gerry and Cynthia and helps foster the friendly rivalry between the teams of Goffin/King and Mann/Weil. He's stone-faced, to-the-point, maybe a little gruff, but a softy at heart who cares about his writers. Mostly non-singing but will be required to sing in ensemble numbers. Non-dancing role.

Gerry Goffin – Male Presenting Character, Age: 25-40, Voice Part: Tenor (C3-G4), White. Carole King's first husband and song writing partner, writing lyrics to many of her early hits, such as "Some Kind of Wonderful," "Take Good Care of My Baby," and many others. Gerry proposes after Carole reveals she is pregnant with his baby, however, soon after begins having extramarital affairs with many other women due to an unhappiness in his early marriage, however he does care deeply for Carole. He's a good guy, maybe a little brooding, who wants to do the right thing but gets lost along the way. Strong singer. Non-dancing role.

Cynthia Weil – Female Presenting Character, Age: 25-40, Voice Part: Mezzo Soprano (F3-E5), White. A lyricist working at the Brill Building, she and her song writing partner Barry Mann form a friendly rivalry with Carole and Gerry. She becomes one of Carole's best friends and closest confidants and forms a flirtatious relationship with Barry though she is hesitant to start it, knowing how he is with other women in the past. She's quick of tongue, high in spirit and goes after what she wants. Strong singing/acting role. Some movement skills required.

Genie Klein – Female Presenting Character, Age: 40-60, White. Carole's mother. A stereotypical mid-century mother who is brash and un-hip at points, but always steps up to the plate for her daughter. We mostly see the tough love parts of her, but eventually see the softer side when Carole is in need of her tender side. Some singing in larger ensemble numbers. Non-dancing role.

Barry Mann – Male Presenting Character, Age: 25-40, Voice Part: Tenor (C3-A4), Any Ethnicity. A song writer working at the Brill building. Barry is full of energy, a bit of a flirt, and confident. He falls quickly in love with his lyricist Cynthia Weil and spends some time convincing her to marry him, while trying not to die from his anxiety and hypochondria. Strong singer and good comedic timing. Some piano/guitar skills are preferred, but not essential. Some movement skills required.

Marilyn Wald/Ensemble – Female Presenting Character, Age: 20-40, Voice Part: Alto, White. A pop singer, notably performing “Pleasant Valley Sunday.” Will double in ensemble roles throughout the show and will include dancing in ensemble numbers.

Betty/Ensemble – Female Presenting Character, Age: 20-40, Voice Part: Alto, Any ethnicity. Carole’s childhood best friend and confidant. Mostly spoken role. Will double in ensemble roles throughout the show and will include movement in ensemble numbers.

Little Eva/Shirelle/Ensemble – Female Presenting Character, Age: 18-30, Voice Part: Alto w/ High Extension, Black. A pop singer who begins working as a babysitter/nanny for Carole and Gerry’s daughter. When Carole and Gerry struggle to find the right person to perform Carole’s latest tune “Locomotion,” they realize Little Eva is the perfect fit. Has charm, charisma and strong movement and vocal ability. Will double in ensemble roles throughout the show.

“Uptown” Soloist/Shirelle/Ensemble – Female Presenting Character, Age: 20-40, Voice Part: Alto w/ High Extension, Black. Active member of the ensemble but has a featured moment singing the song “Uptown.” Non speaking role. Movement will be required.

Lucille/Shirelle/Ensemble – Female Presenting Character, Age: 20-40, Voice Part: Alto w/ High Extension, Any Non-White Ethnicity. Donnie’s secretary. Mostly spoken role. Will double in ensemble roles throughout the show and will include dancing in ensemble numbers.

Janelle Woods/Shirelle/Ensemble – Female Presenting Character, Age: 20-40, Voice Part: Alto, Black. A pop singer, notably performing the hit “One Fine Day.” An artist whom Carole and Gerry write music for. Janelle becomes a focus of Gerry’s extramarital affairs. Strong movement skills preferred. Will double in ensemble roles throughout the show.

The Drifters/Ensemble – Male Presenting Characters, Ages: 20-40, Voice Part: All ranges will be considered to make up this group of artists. Looking specifically for 1-2 strong tenors, Black. The Drifters are a 4-piece all male pop/R&B group of the time (i.e. The Temptations/Commodores). Strong ability to blend/harmonize tightly and strong movement required. Will double in ensemble roles throughout the show.

Nick/Righteous Brother/Ensemble – Male Presenting Character, Age: 20-40, Voice Part: Bari-Tenor, White. New York based session musician. Responsible for getting Carole to come out of her “woman behind the curtain” shell and perform her music as herself. There’s a connection with Carole, but she is wary of getting involved. Non-dancing role, but will require singing and some movement in ensemble numbers.

Neil Sedaka/Lou Adler/Righteous Brother/Ensemble – Male Presenting Character, Age: 35-60, Voice Part: Bari-Tenor, White. Influential record producer and executive in the sixties. Non-dancing role, but will require singing and some movement in ensemble numbers.

Five Golden Rings

Holly

Female Presenting - Late 20s/Early 30s

Nick

Male Presenting - 50s/60s

Lance

Male Presenting - 30s

Trish

Female Presenting - Late 20s/Early 30s

Grace

Female Presenting - **To Be Cast at a Later Date**

Ensemble

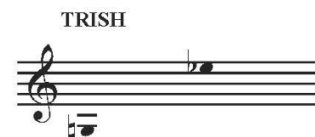
Male & Female Presenting

Bradley

Male Presenting - 30s

Five Golden Rings

Vocal Ranges



The Jungle Book

Baloo – A fun loving bear. Silly. Passionate. Any ethnicity

Bagheera – A clever panther. Leader. Any ethnicity

King Louie / Hathi Any ethnicity

King Louie – In a past life was a Sax player in a jazz band in New Orleans...expressive and cool orangutan.

Hathi – Military General. Very bossy elephant, no humor!

Kaa / Young Girl Laila Any ethnicity

Kaa – A sinister snake with a French accent and slimy traits like “Gollum” from *Lord of the Rings*.

Laila – young girl who meets Mowgli

Mowgli – Boy growing up in the jungle. Physical actor, comic, strong sense of self. Southeast Asian

Shere Khan – Man eating Tiger. Brash, bold, fearless. Any ethnicity